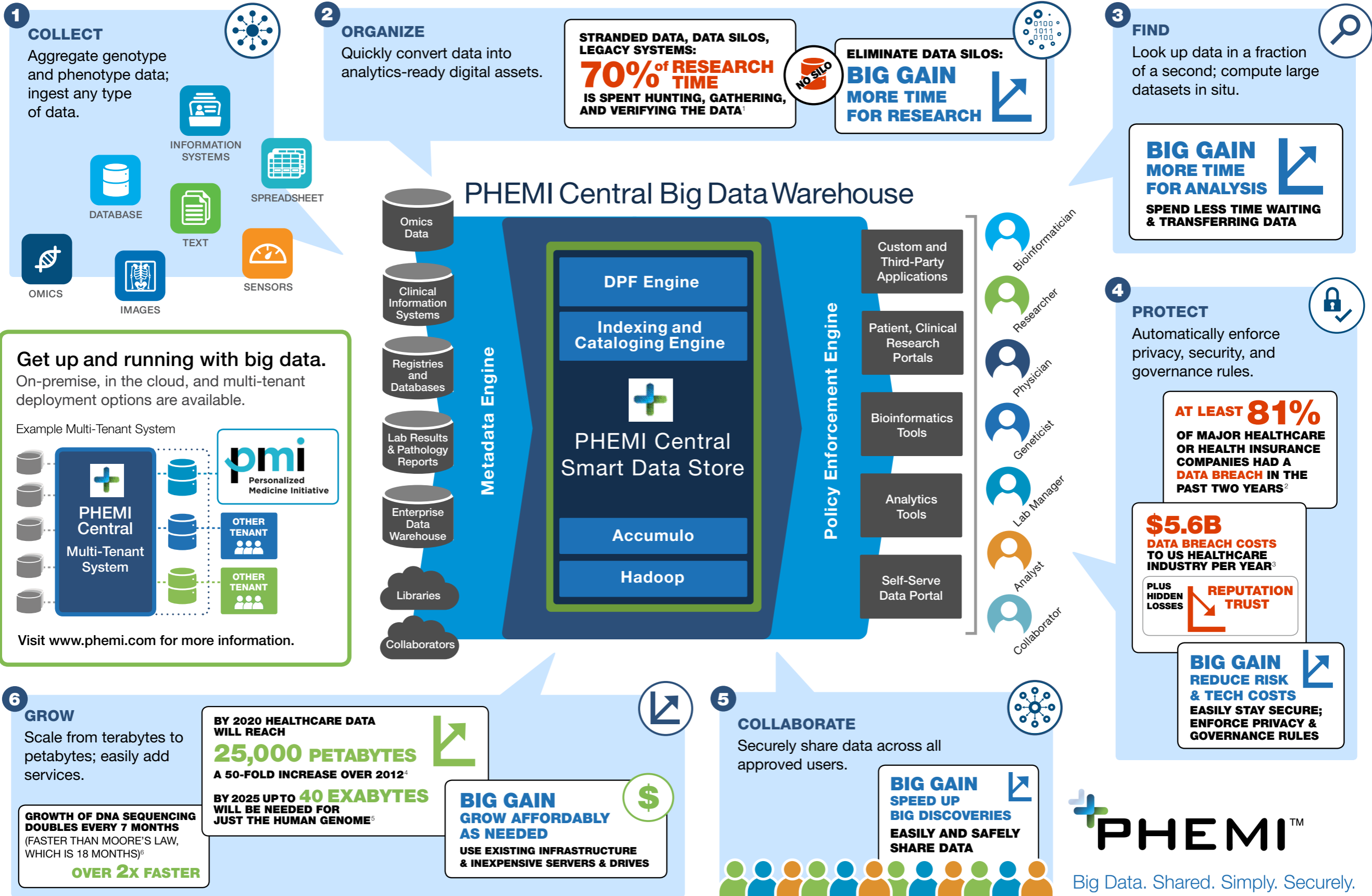


PHEMI Central Turns Big Data into Big Gains for Precision Medicine



PHEMI™
Big Data. Shared. Simply. Securely.

1. Steve Lohr, "For Big-Data Scientists, 'Janitor Work' Is Key Hurdle to Insights," *New York Times*, August 17, 2014. 2. Jennifer Abel, "At least 81% of major healthcare or health insurance companies had a data breach in the past two years," *Consumer Affairs*, September 4, 2015. 3. Based on the yearly cost of data breaches to the US Healthcare industry, as estimated by the Ponemon Institute, 2014. 4. As estimated by Roski J, Bo-Linn GW, Andrews Ta. in "Creating value in health care through big data: opportunities and policy implications." *Health affairs* (Project Hope) 2014 Jul.33(7):1115-22. 5. Stephens ZD, Lee SY, Faghri F, Campbell RH, Zhai C, Efron MJ, et al. (2015) "Big Data: Astronomical or Genomical?" *PLoS Biology* 13(7): e1002195. doi:10.1371/journal.pbio.1002195. 6. Ibid.